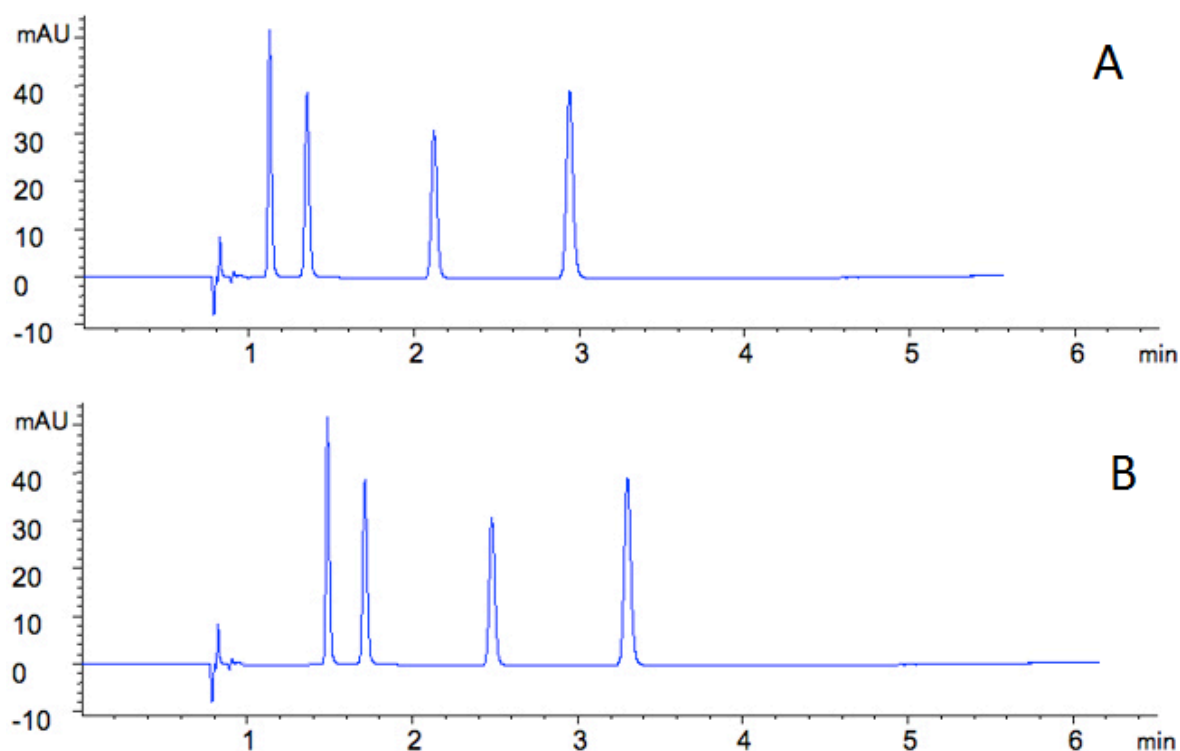


Dwell volume effect on HPLC analyte retention in gradient methods - Primer

Dwell volume is the volume between the point where the solvents are mixed and the HPLC column. Suppose we have a method with a hypothetical gradient as follows:

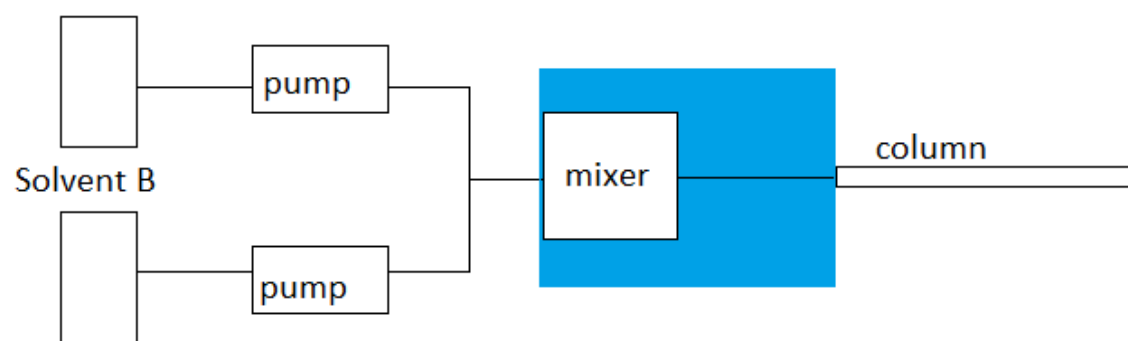
Time (min)	% B Solvent
0	20
9	60
10	20

From the table, we can see that the gradient begins immediately, but in practice this is not what really happens. It takes a certain amount of time for the mixed solvents to reach the column, so there is a delay in when the gradient actually starts. The amount of delay is determined by how large the dwell volume is. An example in data between a system with a lower (A) and higher (B) dwell volume could look something like this:



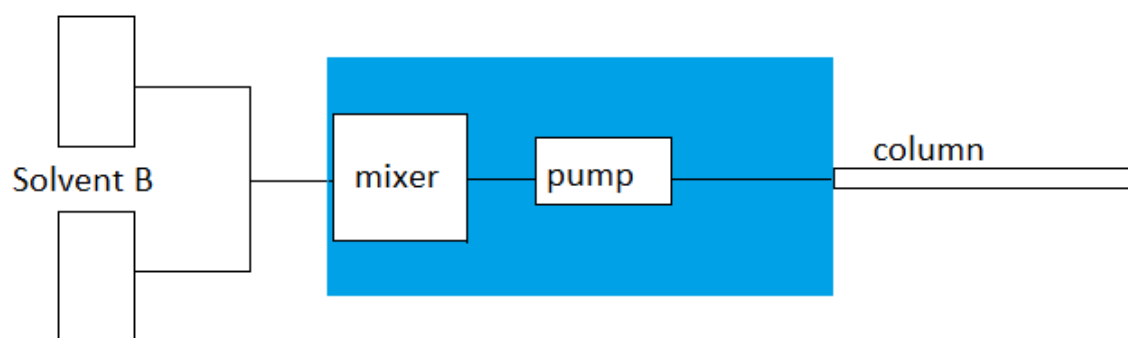
The main contribution to dwell volume is whether high or low pressure mixing is used. Here is a simplified schematic showing the difference in dwell volume between the two systems:

Solvent A




High Pressure Mixing

Solvent A



Low Pressure Mixing

 dwell volume

COGENT
HPLC Columns™

Printed from the Chrom Resource Center
Copyright 2025, All Rights Apply
MicroSolv Technology Corporation
9158 Industrial Blvd. NE, Leland, NC 28451

Tel: (732) 380-8900
Fax: (910) 769-9435
Email: customers@mtc-usa.com
Website: www.mtc-usa.com